

The **Perfins** Bulletin

Volume 68, Number 6

Whole Number 649

- A Chance to Help
- Perfins at APS Summer Seminar
- GTMO Perfin
- Why Attend the Perfins Convention?
- Upside Down and Sideways
- Argentine Mystery Perfin
- 2014 Index
- It Might Have Been ...
- Auction #141

Sand Paper, Curled Hair and Glue

Robert Littrell (#3992)

Well, this is how it started: I saw an auction listing for an Armour and Company cover. (See Figure 1, below - upper scan.) The corner card and the perfin itself were strikingly similar to the *Compañía Armour de Cuba* corner card on an envelope that I showed you in the *Perfins Bulletin* (Vol. 66, No. 3). It has an Armour and Company Pattern A87.2 ([AC/o]) perfin as listed in the *Catalog of United States Perfins* (US Perfins Catalog), and is postmarked from the Union

Stockyards in Chicago. It now resides in my Cuban collection to show the similarity to its Cuban subsidiary. Nice enough, but nothing to write home to mom about.

A couple of months pass. Another Armour perfin cover comes to auction on eBay. But this time it is from the Armour Sand Paper Works and postmarked from the same Stock Yards Station. (See Figure 2, below - lower scan.) Five dollars met my (cheap)

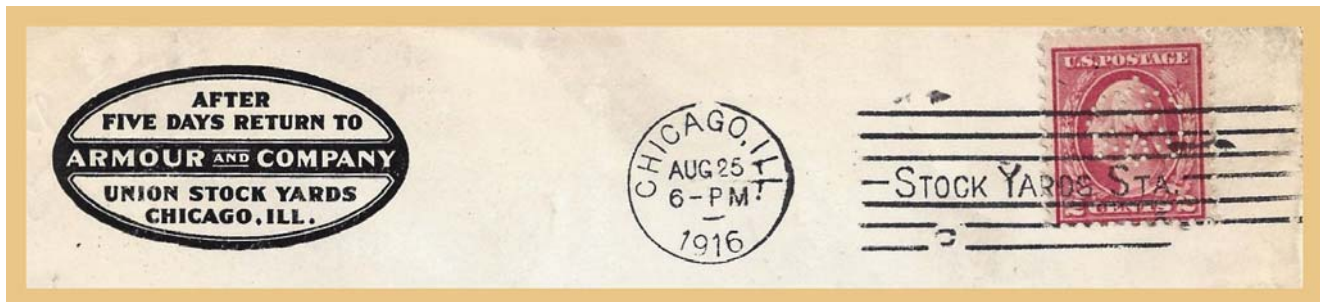
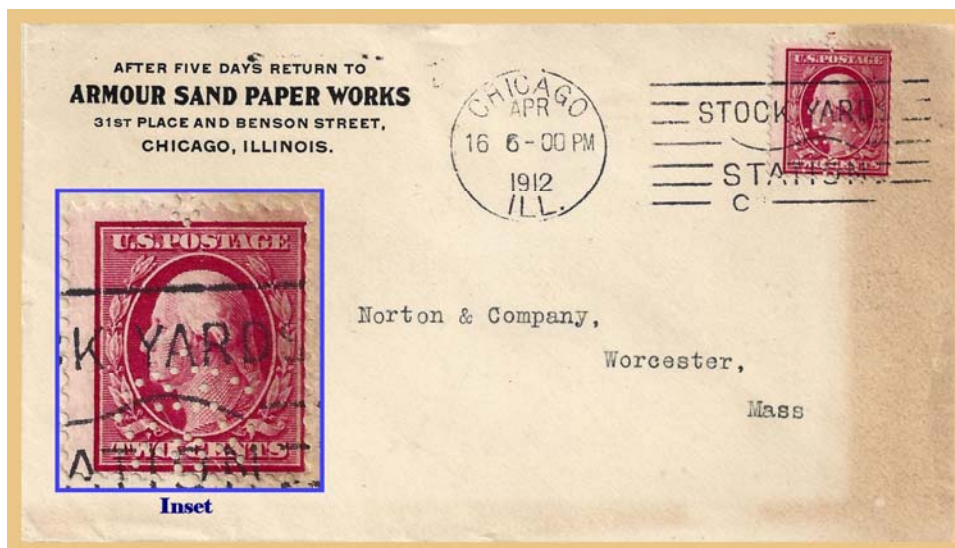


Figure 1 (above)
Cropped upper portion of the
Armour and Company cover

Figure 2 (below)
Armour Sand Paper Works
cover



criteria for a cover, so I sprang for it and waited. It was all I hoped for and more. The perfin pattern was exactly the same, A87.2, as listed in the US Perfins Catalog. The user being different than stated in the US Perfins Catalog, albeit a subsidiary company, I reported it to Stephen Endicott, US Catalog Chairman. The surprise was on the back. On the flap was an advertisement. It stated that it was the manufacturer of "Sand Paper, Curled Hair and Glue". (See Figure 3 on Page 103.)

(Continued on Page 103)

The *Perfins Bulletin* is the official journal of The Perfins Club - Founded 1943

2014 OFFICERS, DIRECTORS & MANAGERS

EXECUTIVE BOARD

PRESIDENT

Jerry Hejduk
P.O. Box 490450
Leesburg, FL 34749-0450
352-326-2117
fjprepers@comcast.net
Term expires 12/31/2014

VICE PRESIDENT

John C. Foster
4113 Paint Rock Drive
Austin, TX 78731-1320
512-346-8253
retsoftware@hotmail.com
Term expires 12/31/2016

SECRETARY

Ken B. Rehfeld
P.O. Box 125
Spokane Valley, WA 99016-0125
509-924-6375
kenrehfeld@comcast.net
Term expires 12/31/2016

TREASURER

Dan Baugher
14618 Big Timber Lane
Chesterfield, MO 63017-5659
636-537-5365
dbaughner@charter.net
Term expires 12/31/2015

DIRECTORS-at-LARGE

Doug Turner
P.O. Box 3069
Ventura, CA 93006-3069
805-339-9575
dturner@west.net
Term expires 12/31/2014

Paul Mistretta
4148 Commodore Drive
Atlanta, GA 30341-1533
678-547-9344
paulmistretta70@gmail.com
Term expires 12/31/2015

Duane Spidle
6140 Coyote Lane
Peyton, CO 80831-8300
719-683-3309
duaneandsue@elpasotel.net
Term expires 12/31/2016

IMMEDIATE PAST PRESIDENT

Bob Szymanski
10 Clarridge Circle
Milford, MA 01757-1371
508-478-7303
perfinman@comcast.net

The *Perfins Bulletin* EDITOR

Clark Buchi
816 High Point Ridge Road
Franklin, TN 37069-4767
615-790-7746
eclark8@yahoo.com

MANAGERS

AUCTION

Joe Giampietro
6478 State Road, G-10
Parma, OH 44134-4166
440-888-1470
mo13jo@aol.com

COVER SALES MANAGER

Millard J. Driscoll
301 Driver Avenue
Summerville, SC 29483-2961
843-875-0847
mdriscoll@sc.rr.com

FOREIGN CATALOG CHAIRMAN

John M. Randall
2540 Carquinez Avenue
El Cerrito, CA 94530-1548
510-233-6647
jv.randall@comcast.net

LIBRARIAN

Doug Cutler
5943 Gullstrand St.
San Diego, CA 92122-3819
248-212-0821
sobearcat@hotmail.com

PERFINS SALES MANAGER

Robert T. Combs
P.O. Box 220
Tome, NM 87060-0220
505-866-0949
stampmgr@hubwest.com

PUBLICATION SALES MANAGER

David Lightle
10616 Cielo Vista del Norte NW
Corrales, NM 87048-8902
505-898-8037
perfinpaul@msn.com

SUNSHINE

Francis Stunzi
37 Smith Street
Rouses Point, NY 12979-1602
518-297-2169
fastunzi@primelink1.net

U.S. CATALOG CHAIRMAN

Steve Endicott
20 Greensburgh Lane
San Anselmo, CA 94960-1000
415-454-1475
perfins@gmail.com

U.S. REVENUE CATALOG CHAIRMAN

Arthur J. Mongan
12432 Pretoria Drive
Silver Spring, MD 20904-1845
301-572-5459
revs.perfins@gmail.com

The *Perfins Bulletin*

EDITOR

Clark Buchi

ASSOCIATE EDITORS

Rudy Roy - U.S. Perfins
Doug Turner - Non U.S. Perfins

PUBLISHER

Ken Masters
816-835-5907
krmasters@aol.com

The Perfins Club membership is open to all persons interested in the collection and study of Perforated Initials and Insignia in postage stamps. Yearly dues are \$15 for U.S., \$18 for Canada and \$25 for other Non-U.S. Dues may be mailed to the Secretary listed above or by PayPal to perfin@charter.net. Since the club is on a July 1 to June 30 dues year, appropriate dues adjustments are made the first year based on the actual date of membership. Annual dues include a subscription to *The Perfins Bulletin*, mailed bulk rate printed matter. Mailing by 1st Class for an additional postage charge. Applications are available at www.perfins.org or from the Secretary listed above.

Please submit *Bulletin* articles, news, or advertisements to:

Clark Buchi

816 High Point Ridge Road, Franklin, TN 37069

(615) 790-7746 eclark8@yahoo.com

The Perfins Bulletin is copyrighted by The Perfins Club. Cited quotations are encouraged. Permission for extensive use of information in the *Bulletin* may be obtained from the editor.

The Perfins Club



www.perfins.org

Visit The Perfins Club web site at <http://www.perfins.org> -- Mike Hynes, Webmaster (mike@precancels.com)

Sand Paper, Curled Hair and Glue (Continued)

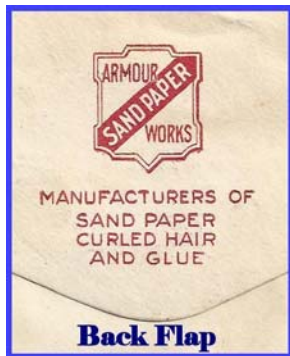


Figure 3

When I was a boy, I heard people talk about when horses were old or if a horse lost a race it was “ready for the glue factory”. It seemed to be a natural enough fit for a meatpacking company to have a subsidiary business of making glue with the animal byproducts. Same thing with sand paper as it takes glue to make that as well. But of all things, “Curled Hair”? I had

no idea about that one.

I started to Google “Sandpaper Curled Hair Glue” and surprisingly I found another company in the same business. This showed up as a corner card on a postal stationery envelope of the 1880s. (See Figure 4 at right.)

If you add “Armour” to the search, you will find “The Real People Behind Our Famous Brand Names: Philip Armour”. He started in the meatpacking business in Milwaukee during the civil war and soon prospered. He built the massive Union Stock Yards in 1872. In the 1880’s, Armour and Company began converting byproducts of the slaughterhouse into products such as glue, combs, oleomargarine, soap, brushes, buttons, ammonia, fertilizer, glycerin, sand paper, and, yes, curled hair.

The story tells what curled (animal) hair was used for: stuffing seat cushions! Mystery solved. It was easier than I thought.



Figure 4
Delany & Co.
corner card

The US Catalog Chair Can Use Your Help

Steve Endicott (LM#2284)

Some questions regarding specific patterns arose during the final assembly and proofreading of A&C#4 last summer. I resolved the issues when possible, but several issues had to be deferred for further research and therefore deferred for inclusion in the next A&C edition. I intend to share these questions with the members via *The Perfins Bulletin* in various 2015 issues. Some of the questions involve minor points; other questions may be difficult to research. I would very much appreciate hearing from members and seeing documentation that you have to help resolve these questions. There are opportunities here for many members with various backgrounds and various collection interests to participate. In this article I share with you the first three questions:

The first question involves the location of the perforator used for **I43.7G-15**, used from 1926 to 1946. *The Catalog of United States Perfins* (US Perfins Catalog) lists the primary location as Seattle, WA. There is a supplemental note discussing movement of the perforator between (my word!) Seattle and Cedar Rapids, IA. The note appears to have some conflicting information about the time periods that the perforator was in the two locations and therefore, when and from where to where it was moved. I would like to see covers documenting postmarks and usage throughout the period 1926 to 1946.

The second question is a minor issue and should be a simple one to resolve. Pattern **F214** has been identified as belonging to F X Baumert & Company in

New York City. Are “F X” initials which should have periods after them or are they something else? The company is found listed both ways on the Internet, but one can quickly observe that different cities and different time periods are involved with the punctuation variations. I would like to see covers from the New York office during the perfin usage period (1902-17) to determine the correct punctuation.

The third question involves the proper user of the railroad perfin **M212**. The US Perfins Catalog currently lists The Missouri Pacific Railway Company (sometimes referred to as MoPac) as the primary user of this perfin (from 1912-36). Missouri Pacific Iron Mountain is listed as a secondary user. I cannot find any reference on the Internet to a company with this exact name. MoPac did acquire The Iron Mountain & Southern Railway in 1917. Perhaps this acquired railroad line used MoPac’s M212 perfin after being acquired. I would like to see covers documenting this secondary usage.

Those are the three questions for this month! One of the aspects of collecting perfins that I enjoy the most is the continual opportunities for new philatelic research. I hope you enjoy that part of our hobby too. I look forward to hearing from some of you and seeing some solid, physical documentation from covers that can be used to update our catalog information. If you send electronic scans of covers (preferred), then please use .tiff or .jpg file structures at 300dpi. My contact information is listed on page 102.

Perfins at the APS Summer Seminar

Gene Stutzenstein (#3849)

This past June I stuck my philatelic neck out and delivered an elective on perfins at the American Philatelic Society (APS) Summer Seminar. A group of some 25 interested collectors (mostly non-perfin) sat attentively through my PowerPoint “Holey Stamps - an Introduction to Collecting Perfins.” As backup material I showed various covers, the Randall and other catalogs, handed out copies of articles by Rick Miller and Kathleen Wunderly from *Linn’s* and some pages from my exhibit at our local Toledo show. The APS owns a perfin machine which I used to perforate a sheet of the 8¢ Statue of Liberty stamps and handed them out to each attendee. At registration each attendee received a gift of USB thumb drives from the APS. I was gratified when six or eight attendees asked afterward to download the program so they could present it to their clubs. One gentleman told me it was the best presentation he had attended. Of course I made available Perfins Club applications so maybe we will have a new member or two. [Anyone wishing to view the program (no audio at this time) please feel free to contact me: GeneStutz@MMPToledo.com or write for a CD to me c/o Minuteman Press, 5847 Secor Road, Toledo, OH 43623.]

For those of you unfamiliar with it, the APS hosts a “Summer Seminar” each June in Bellefonte, Pennsylvania. Known also as “Stamp Camp,” this week-long program is hosted at and follows the SCOPEX show at the American Philatelic Center (APC).

Beginning with Sunday evening dinner the event features some dozen two- and four-day intensive study courses on a wide variety of topics. These classes are taught by experts in each particular field of study, some of whom have returned to teach for many years. This year a record 85 collectors devoted a week of their time and a few bucks to attend and advance their philatelic knowledge. (Who said the hobby is dying?)

Each morning begins with breakfast in Sundman Hall followed by a presentation of general interest at 8:00. Scheduled classes run from 9:00 to 11:30 and 3:00 to 5:00. Lunch is served, followed by a choice of

several short “elective” courses, or workshops hosted by volunteers prior to returning to your scheduled class’s afternoon session.

It’s not all school-work, however. Gretchen Moody, APS Education Director and all-around super person, always plans a fun week around the scheduled program. On Monday evening you are treated to “America’s Next Philatelic Idol” amateur hour (polish your act), often followed by an ad-hoc bowling tournament; on Tuesday evening an auction (sell your dupes), Wednesday night bourse (sell your dupes that didn’t sell at the auction), and Thursday night’s cocktail reception followed by a special dinner and speaker.

Summer Seminar is NOT just for experts and experienced collectors. I have met beginners who attended to find out what stamp collecting is all about. Folks returning to the hobby come to find out what’s new. Many sign up for a course outside their collecting interests. (I learned about trans-Atlantic Air Mail during WWII – taught by Ken Lawrence and David Crotty). You will get to meet and interact with fellow collectors from around the country, and even some from outside the USA. You will also meet and interact with the fine staff at our APS.

The great fraternity that is stamp collecting brings us together at Bellefonte once each year to visit the headquarters of our hobby, and a great place it is. If you wish to skip elective courses you can spend time at the American Philatelic Research Library (APRL) or exploring the APC. Build your collection at the Donation Sales, Circuit Sales or Internet Sales Departments. Root through boxes of covers donated to the APS – you might even find some with perfins. I did.

If you are not a member of the APS, Summer Seminar is one very good reason to join. If you are a member and have never made the journey to Bellefonte please consider joining us next June. For more information on this wonderful philatelic event go to: <http://stamps.org/Summer-Seminar>.

Website for Perfins of Finland

Doug Cutler (LM#126)

Below is a web address for an excellent website devoted to the perfins of Finland:

<http://www.jiv.dk/finland/perfin.php>

GTMO Perfin

Steve Endicott (LM#2284)

Guantanamo Bay Naval Base is a United States military facility at the southeastern edge of the island of Cuba. In geographic comparison, the base is approximately the same size as San Francisco, CA and slightly larger than Manhattan, NY.

During the Spanish–American War, the U.S. Naval fleet secured Guantanamo's harbor for protection during the hurricane season of 1898. The U.S. Marines landed at Guantanamo Bay with naval support, while American and Cuban forces defeated the Spanish troops. In the Treaty of Paris of 1898, Spain surrendered control of all of Cuba to the United States. In 1903, Cuba signed a treaty that leased Guantanamo Bay to the United States for use as a Naval Station, with the understanding that this would reduce the military footprint of the United States on the island.

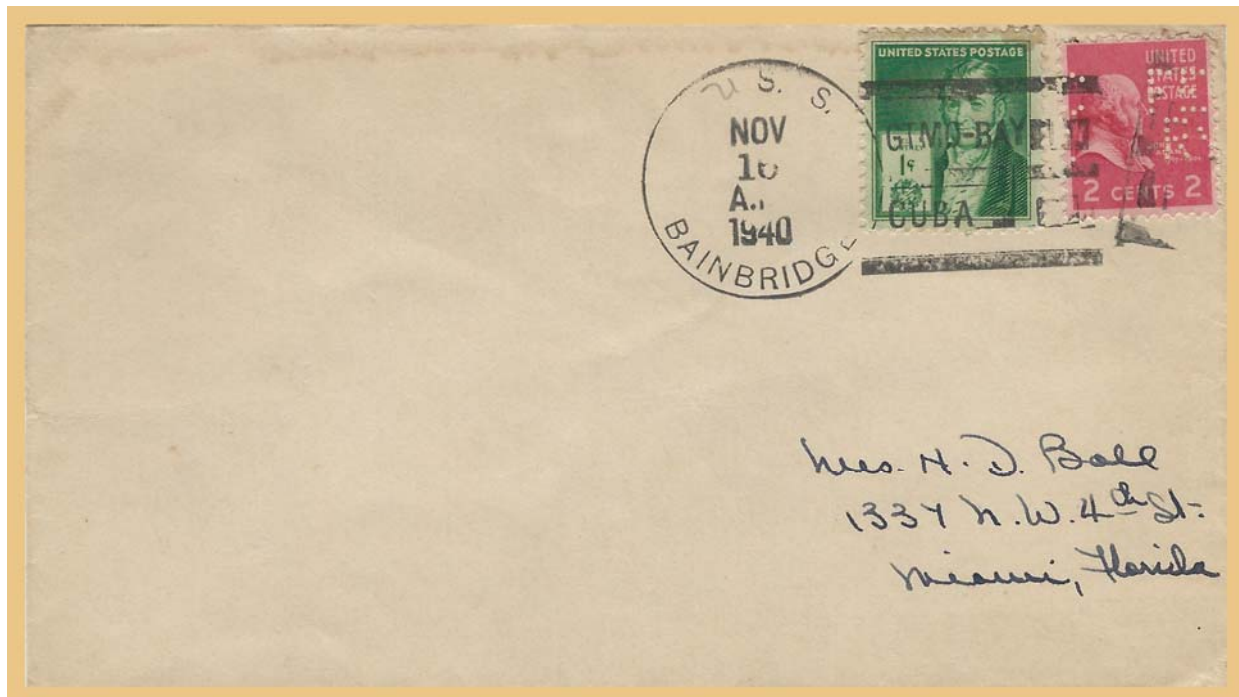
The United States pays an annual lease of \$4,085, which, since the Cuban Revolution, Cuba has refused to endorse or deposit (except for the payment in 1959).

Many of us have heard about the military prison that has been included within the Naval Base since 2002, used for the detention of combatants against The United States.

The relationship between The United States and Cuba is contentious and the Guantanamo Bay Naval Base is one of the hot points of disagreement. The Naval Base needs to provide for its own fresh water source (via desalination) and energy (via wind

turbines, solar and diesel). Several U.S. companies have retail outlets on the Base, including such familiar fast food establishments as McDonalds, Baskin - Robbins, KFC, Subway, Pizza Hut and Taco Bell, among others. Currently there are approximately 6,000 military service personnel and contractors at the Base and several hundred combatant detainees. (It is difficult to get obtain a good number on this statistic.) There are two schools on the Base for children of resident military personnel.

The cover shown below has a two cent 1938 Presidential stamp with perfin F68 in it (**FEC/RY** as listed in the *Catalog of United States Perfins*), used by the Florida East Coast Railway Company with general offices in St. Augustine, FL. The cover is postmarked from the USS Bainbridge on November 16, 1940. I cannot read the entire postmark over the stamps, but it starts as "GTMO-BAY...". This postmark is nearly six years earlier than any other postmark reported for this perfin F68 and will certainly be added to our growing postmark database. Florida East Coast Railway Company is not known to have had any business relationship at GTMO, so this is obviously an incidental, but interesting, usage of the perfin. I have discussed this cover with Robert Littrell (#3992) who certainly knows far more about postal history involving Cuba and perfins than I will ever know. Robert thinks that this may be the first reported perfin usage postmarked from the Guantanamo Naval Base.



Why Attend the Annual Perfins Club Convention?

Joe Coulbourne (#2574)

I wanted a chance to pass on my thoughts about attending the Perfins Club annual convention. I was convinced to attend the 2014 convention and I am so thankful that Bob Szymanski (LM#145) talked me into going. Since this was my first convention and I didn't see the whole club there, I would like to pass on the good and the bad as I see it and try to convince others who have not made the pilgrimage, to take the plunge and come to the 2015 convention.

First things first, this is NOT your normal stamp convention or stamp show as most of us know it. I kept looking for some sort of notice in *Linn's Stamp News* or other philatelic magazines and never saw any reference to the convention. While at the convention, I did ask, "Why no press coverage?" The response was that the perfin and precancel collectors and dealers wanted to keep the convention "low profile" as it was felt that a swarm of people that did not specialize in either precancels or perfins would detract from the experience. To emphasize the point, the dealers at the convention allow members to take stockbooks to the tables and sort through their sales material at the members' leisure. I personally found this very welcoming and immediately appreciated the practice. Dealer's would literally walk away and leave their tables while collectors sorted through material. Let's face it – it takes a bit of time to sort through a sales booklet or folder when you collect perfins by type, issue or position. Dealers would even allow you to take their material to your room overnight to browse through.

The convention is at the hotel where you stay. No need to hunt around and find a parking space. The convention planners take care of everything for you. The room rate is confirmed ahead of time and the hotel works with them to give you the best experience possible. Great lighting, lots of space and the friendly attitude of the show hotel staff make it a great experience. I truly enjoyed my stay and I have stayed in many, many hotels. To get to the convention, I had only to ride the elevator to the first floor and then a one minute stroll put me in the bourse/exhibit room. Each day, a dealer paid for the coffee service that was free to members (and you could drink in the convention area). Cookies were provided during the day for our snacking pleasure. Again, this sort of treatment lent itself to the feeling that we were a group and not a gaggle of stamp collectors who didn't know each other. Meeting rooms were nearby, and the formal but casual atmosphere during the meeting invited participation and was particularly welcoming.

I felt at home at the various business meetings and truly felt like "one of the gang" even though this was my first convention. One more thing I feel I need to say is that the bourse runs until 10pm or later – if you are buying, the bourse is open. How many stamp shows have you been to where there is activity from 8am to 10pm or later? It was a first for me and I loved it.

I really didn't know how this whole thing worked. I drove from Virginia to Missouri and checked into the hotel. It was late so I didn't bother hunting anyone down that first day to ask questions. The next morning I strolled down to the hotel restaurant for breakfast and just outside the restaurant was the "events of the day" kiosk which listed the convention's events of the day, when they occurred and where they were to be held. This seemed pretty easy to me and after breakfast I strolled into the convention bourse area. Upon entering, I saw the registration table and checked in. I was given a package of goodies and lots of information covering most aspects of the convention. This particular convention was coordinated through the Missouri Precancel Club and our Perfins Club Treasurer Dan Baugher (#3825) was at the registration table as he was a "local." Dan was very informative and answered every question I had about the event.

The convention is a joint event and The Perfins Club joins with the Precancel Stamp Society (PSS) to set up and hold the event. I don't think that either of the clubs could pull this off alone but together we are a force. Remember that precancelled perfins (prepers) unite the two clubs. Prepers are precancels that are perfined or perfined precancels, however you see it. Almost every one of us collects both areas or overlaps through prepers. Most formal "dealers" are precancel dealers, but almost every dealer in the room had both perfins and prepers to sell. I am a people person and particularly enjoyed meeting the dealers. Arnold Selengut, who is more of a traditional stamp dealer than most, was there and I enjoyed talking with him as I have known him for decades.

I think I must discuss that the best thing of all was meeting other members, officers of our club and the dealers whose ads I have often seen in our periodicals. Meeting the catalog editors and the bulletin editor was extremely entertaining as Clark, Steve and John are some of the best perfin people you can know. What a wealth of information you can gain just talking to them. Steve Endicott (LM#2284) in particular, was very helpful to me as he explained in detail, the

(Continued on Page 107)

Why Attend? (continued)

intricacies of navigating the new E-Catalogue. Clark Buchi (LM#4028) is a wonderful person and a joy to talk to – you just can't help liking the man as soon as you meet him. John Randall (#1336) may have forgotten more detailed perfin information than I will ever know. Every single Perfin Club officer seemed to enjoy helping me, answering questions and just chatting up perfins. Meeting our President, Vice-President, Secretary and Treasurer was a true bonus and these gentlemen are warm, friendly and love to talk about our hobby.

I think I must mention perfins and the availability of them at the convention. I bought a shoebox full of them – yes a shoebox. Perfins from all over the world were in the box and there were probably 30,000 or so in the box. I am still sorting through this and have added several types to many of my collections. The shoebox was \$100 – an absolute bargain anywhere – I could “flip” them on eBay for many more dollars than I paid but they are mine, all mine, and not going anywhere. Almost every dealer and many of our officers and members had material to sell or swap. I am not talking about onesy – twosy perfins but *thousands* of them. There was more material there than I could certainly afford but I filled many empty spaces in my perfin collections while I was there.

Robert Littrell (#3992) had his Cuban perfin exhibit at the convention in the bourse hall. It may be but an island in the Caribbean but Robert has an exemplary exhibit. I personally enjoyed meeting Robert and talking Cuban perfins with him. If you don't know of Robert, peruse the last year's worth of Perfin Club Bulletins and you will see that his interest in Cuban perfins is his love. The passion he exhibits sucks you in and makes you want to collect Cuban perfins. Robert gave a personal tour and chat of his exhibit after the Perfins Club business meeting which was said to be tradition with the club. The experience was a real treat.

Speaking of meetings, there were business meetings and educational briefings by members while we were there. Remember, the convention spans

perfins and precancels. There were discussions about E-Catalogs as well as how to tell rare precancels from the common. That insight could lead to a fiscal waterfall sometime in the future. Steve Endicott (Perfins Club) and Ralph Kimball (Precancel Stamp Society) took the time to help me set up and configure the various E-Catalogs that I was able to purchase at the convention. That personal attention from the editors enabled me to understand and exploit the capabilities of these electronic products. Speaking of catalogs, many, many catalogs were available at the convention and the authors/editors were there to both educate us on how to use them as well as to answer questions we had about the catalogs.

Lastly, I would feel remiss if I did not mention the true enjoyment I felt meeting our Perfins Club officers and members, having a lunch or dinner with them and just being able to talk “perfins” to someone who understood what I was talking about. I love my wife, but these bits of paper I am fanatical about don't interest her in the least. I met several members whom I knew from eBay as perfin sellers but didn't know them personally. I now know what most of the members at the convention collect and I will certainly look out for material that fits their collecting interest.

The only down side to the convention was the hotel cost. I spent money for a hotel room that could have been spent on material for my collection. When I consider the convention, the members, the officers, and all of the other benefits I enjoyed while I was there, I consider the money I spent for the hotel room well spent and an investment in my perfins education. I wish more of our Perfins Club members were there so I could put faces to names and gotten to know more of our membership.

I strongly urge each and every one of our club members to consider coming to Boxborough, Massachusetts, next August. I truly feel that you will benefit from this experience and absolutely enjoy your time at the convention. I can tell you that I will never miss another convention unless illness or death prevents me. I would love to see you there!

See you in Boxborough, Massachusetts

August 4-8, 2015

More details on page 110.

Upside Down and Sideways

Bob Szymanski (LM#145)

Every once and awhile it is good to go over collecting basics. We always have new members and they profit greatly with knowledge of our little corner of the philatelic field. Older members (Yes, and I'm one of them, even though my golfing group calls me "kid.") like refreshers as well.

Perforators were made to punch a series of holes. You would be hard pressed to find stamps from the first country and largest user of perfins, Great Britain, that were anything but position #1 (See Figure 1, below) - that is, perfin applied upright while stamp is face up. Are the British more precise by nature? I suspect the real reason is that since the perforator manufacturer, J. Sloper and Company, perforated very many of the patterns themselves, they gave strict instructions on how the perforating job was to be done. And, indeed, it was done as they directed in a high percentage of perfins.

However, perforators could be operated in such a manner that they could perforate stamps in seven other, different positions as well - four positions with the stamp face up and four with the stamp face down. Sometimes they might even fold the stamp sheet in one or more places making for some interesting combinations.

Figure 1 (below) shows eight stamps from the French Offices in the Levant with all eight positions



Figure 1
France, Offices in the Levant
Perfin upright,
Stamp in 8 Positions
(4 with perfins applied on stamps while face up
and 4 with perfins applied on stamps while face down)

shown. Figure 2 (below) shows eight stamps from Funchal, again with all eight positions shown. I have



Figure 2
Funchal
Perfin upright,
Stamp in 8 Positions
(4 with perfins applied on stamps while face up
and 4 with perfins applied on stamps while face down)

numbered the positions as they are listed in the Canadian perfin catalog (*Canadian Stamps with Perforated Initials*). I know of several collectors who use this method for enhancing their collections. Most of these collectors are Canadian or collectors of smaller countries that may not have produced many perfin patterns to collect. So, this is how they expand and enhance their collecting enjoyment. But if you want a real challenge just try to find a single US perfin pattern punched with all eight positions. I don't have a single one!

A US definitive-sized stamp with the obverse side up in the normal position in which you see the perfin pattern left to right as it appears in the *Catalog of United States Perfins* (US Perfins Catalog) is the most common position (position #1). I counted 1000 of my US perfins. This sample was taken - half from my US collection and half from loose duplicates. 790 stamps (or 79%) were punched in position #1, and 210 stamps (or 21%) in any one of the other 7 positions! You may want to count some of your US perfins to see if you come up with similar results.

I would appreciate knowing if you find any variance from my percentages. My point is that I believe that correct positions of a pattern can be induced from this fact - an overriding majority of copies are punched in the #1 position.

Upside Down and Sideways (Continued)

You may say so what is the point? My good friend and our Sunshine Chairman, Francis Stunzi, only collects perfin in position #1. Some time back, we were discussing his method of collecting and he lamented the fact that some common Defense issues NEVER came the way they are shown in the US Perfins Catalog. The two examples that he gave me were pattern S9 (**Diamond(S)**) and pattern Des. 28 (**[Box(Hourglass)]**). Since I have never collected US perfins in the manner that Francis does, I had not noticed these two patterns but thought that it would be worth looking into.

I pulled all of my copies of these two patterns and after lining up the perfins in the obverse with the face up (See Figure 3, below, for obverse sides.), 107 of 119 (90%) of all copies of pattern S9 were with the control hole at the top (not the bottom of the "S" as printed in the catalog)! Likewise, every single copy, 52 of 52 (100%) of Des. 28 were 90° clockwise or counterclockwise, thus different than the catalog shows. (See Figure 4, at right, for reverse sides.) Is this being a nit-picker? Not if you collect in the one

position! It is interesting to note that although all previous US Perfins Catalogs show the current orientation for pattern S9, the *Illustrations of United States Perfins* (Victor & Margaret Van Lint, 1958) shows the different orientation for pattern Des. 28 that matches what my 52 copies indicate. It certainly seems that inductive reasoning dictates that these two pattern pictures should be adjusted to the correct orientation in the next A&C.

I have already given you one project (in *The Perfins Bulletin*, Volume 68, Number 5) to check your US perfins, but the second and more important project is to look at all of your copies of pattern S9 and pattern Des. 28 perfins that you have and report back to me as to how many perfins you have and in which position. My contact information can be found on Page 102, Immediate Past President. You will get the report in an upcoming *Bulletin*. Have you seen any other "upside down or sideways" catalog perfin patterns that may need to be looked at more closely? Let's all strive to make our US Perfins Catalog as perfect as is humanly possible!



Figure 3
Obverse sides
Orientations of pattern S9
And pattern Des.28.
Left column as shown in US Catalog;
Right columns as commonly found.

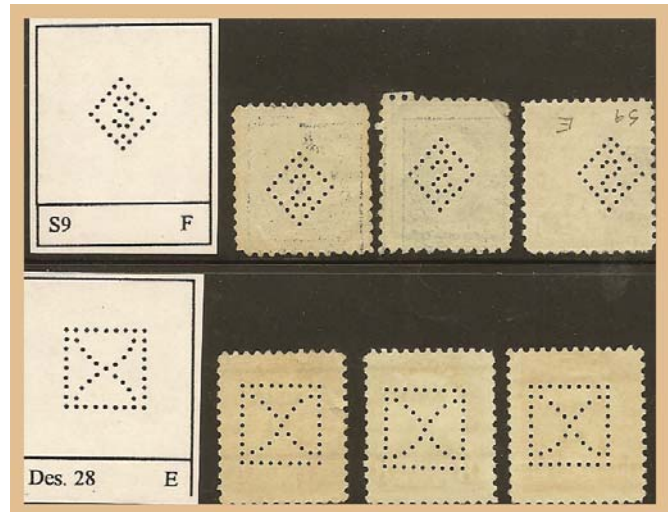


Figure 4
Reverse sides
Orientations of pattern S9
And pattern Des.28.
Left column as shown in US Catalog;
Right columns as commonly found.

An Offer to You

Clark Buchi (LM#4028)

On page 116 of this issue of *The Perfins Bulletin* you will find a small column titled "Cutler's Clippings." Doug Cutler (LM#126) has been kind enough to supply me with some interesting perfin related facts which are too brief to build into an article

for the *Bulletin*, and yet too interesting to ignore.

If you would be interested in sending me some short pieces of information, I offer you the same opportunity as Doug has—an occasional column of your own! And a personal "Thank you!"

Argentine Mystery Perfin

Terry Sitch (#3809)

While working on some Argentine perfins I found the stamp shown in Figure 1 (right) identified as Argentina, Scott #547 (watermark 90). The stamp contains a perfin pattern shown in Figure 2 (right, below).

Looking at the updated *Perfins of the Argentine Republic* article by Bruce Brunell (#2831) in *The Perfins Bulletins* of May/June 2010 (pages 77-79), July/August 2010 (pages 103-07), and September/October 2010 (pages 131-35), I could not find this pattern. Did I have a rare perfin not reported yet?

No! In the *World Perfins Catalog* by Robert J. Schwerdt (LM#505), American Section, under Argentina, there it is. It shows as perfin pattern A8 (unidentified user, Buenos Aires), as shown in Figure 2 (right).

So here is the complicating factor. When I looked at pattern A8 in Brunell's Argentine Republic article, I found a different pattern



Figure 1
Argentina #547
with mystery
perfin pattern

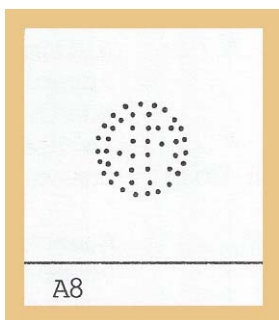


Figure 2
Perfin pattern on
mystery perfin
identified as A8
in Schwerdt Catalog

shown as A8. See Figure 3 (right column). The user is identified as Antonio Munoz, Buenos Aires.

In the updated *Perfins of the Argentine Republic* pages by Bruce Brunell, patterns A8 (Figure 3 at right) and A136 (Figure 4 at right) look a lot alike as if they are mirror images of each other. The old Schwerdt Catalog shows the MA as A136 (the same as Brunell does) but the pattern on my stamp as A8. And Schwerdt's A136 shows the user as Antonio Munoz, Buenos Aires.

Could it be that Brunell's A8 (AM) pattern is in fact the mirror image of A136 (MA), and that the real A8 pattern should be the one as shown in Schwerdt's Catalog?

I would appreciate any information relating to this Argentine mystery. My contact address is Terry Sitch, 5-350 Maryland Street, Winnepeg, MB R3G 1L9, Canada.

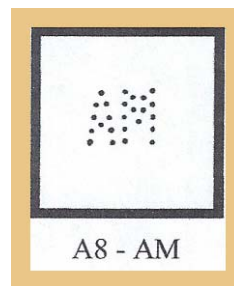


Figure 3
Perfin pattern
identified as A8
in Brunell article

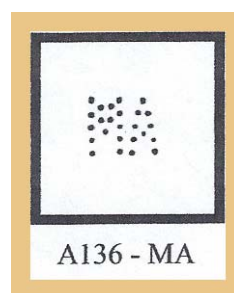


Figure 4
Perfin pattern
identified as A136
in both Brunell
article and
Schwerdt Catalog

2015 Annual Perfins Club Convention

by Jerry Hejduk (LM#3710)


Mark your Calendars for the 72nd Annual Perfins Club Convention which will be held in conjunction with the PSS 94th Annual Convention, hosted by the New England Precancel Club (NEPC), **August 4-8, 2015**, at the Holiday Inn, Boxborough, MA. The nightly room rate is \$94 + tax, and for those of you who will be driving, there will be ample free parking.

According to Mike Gutman of the NEPC, the hotel is located in suburban Boston, 37 miles from Boston's Logan Airport, 40 miles from the Manchester, NH airport and 70 miles from the Providence RI airport. There is a van service from the Logan and Providence airports and currently there is no information about such service from the Manchester airport.

If you are considering renting a car, the Manchester airport is recommended, because it avoids the Boston Metro traffic. Detailed information, including the recommended hotel registration procedure, will be found in the January/February 2015 *Perfins Bulletin*.

You Are Invited To

The Florida Precancel Club
Precancel Bourse and Perfins Xchange
February 11-14, 2015



Holiday Inn Express & Suites
4750 North Dale Mabry Highway
Tampa FL 33614-6509

For hotel reservations call (813) 877-6061
Request "Florida Precancel" rate of \$89.99

For additional meeting information
Call Jerry Hejduk at (352) 326-2117 or write/email
P. O. Box 490450, Leesburg FL 34749-0450
flprepers@comcast.net

Index to The Perfins Bulletin Volume 68—2014

Clark Buchi (LM#4028)

APS Summer Seminar	104	Upside Down and Sideways	108,109
Argentina, Mystery Perfin	110	US-A87.2	101,103
Auction	17,18,37,38,57,58, 77,78,97,98,117,118	US-A218	67
		US-A221-XX	90,91
Auction, Realizations	20,40,60,76,96,116	US-A&C#4	41
Auction, Private	14,15	US-B199.3	64
Beer Label	7,24	US-B233.5	54
Bosnia Herzegovina	115	US-Boxpers	86,87
Bosnia-Town Perfins	65	US-C23 & C23A	7
Bourse, California	23	US-C23A	4-6
Bourse, Florida	13,85	US-Call for A/B+ Survey	71,96
Bourse, New England	85	US-Dated Prepers	46
Convention, 2015	110	US-Defense Checklist	36
Convention, St. Louis	3,11,21,39,48,49, 51,73,81,99	US-Des.90-19	8,9
		US-F45 & G211	10,11,95
Convention, Why Attend?	106,107	US-F68 GTMO	105
Cuba-DUN Revisited	16	US-G45	43
Cuba-Revenue & Official	66,67	US-I100	44
Cuba-Unusual Covers	94	US-I119.5	47
Finland Perfin Website	104	US-J150	112,113
Great Britain I2470.01a	12,13	US-L137	72
Happy New Year	1	US-Liberty Bell	61,63
Index-2014	111	US-M11.5	69,75,79
Luxembourg-Holey Stamps	3	US-M12	88
Memoriam-Dehli	19	US-N101	113
Memoriam-Kienlein	19	US-N136	56
Memoriam-Locke	19	US-O26.5	92,93
Memoriam-Mehwinney	39	US-Perfined \$3 Columbian	15
Memoriam-Mertl	59	US-Perfins on Black Stamps	31
Memoriam-McQuown	59	US-Perfins & Prohibition	74
Memoriam-Oleksyn	19	US-Pumpkin Pi	86
Memoriam-Stein	19	US-Railroad Collection Sale	3
Memoriam-Teets	39	US-S28	32-35
Mexico-Unknown Perfin	68	US-S65	30,31
Perfins Calendar Collecting	50,51	US-S218	55
Perfins Club-Business Mtg	73,83-85	US-Schermack Census	25-27
Perfins Club-Card Award	24,81	US-Schermack Ratings Rev.	28
Perfins Club-Contributors	114	US-Schermack Type III	70,71
Perfins Club-Financial Rept	36	US-Texas Stamp Scandal	33
Perfins Club-Masters Thanks	24	US-Ugly Duckling	44
Perfins Club-Meet Member	45,89	US-What Is It?	4,23,65
Perfins Club-New Editor	21	US-What Is This Perfin?	14,29
Perfins Club-Nominations	21	Want Ads	19,39,59,75,95,115
Perfins Club-Publications	116	Why Perfins?	45,76,93
Perfins Club-Sales Circuits	116	World Stamp Show 2016	1,41
Perfins Club-Secretary Rept	19,39,59,79,99,119	Worldwide-Holes	29
Perfins Club-Walker Award	23,81	Worldwide-Perfins/Checks	52,53

This Might Have Been a Great Cover, But ...

John Lyding (LM#116)

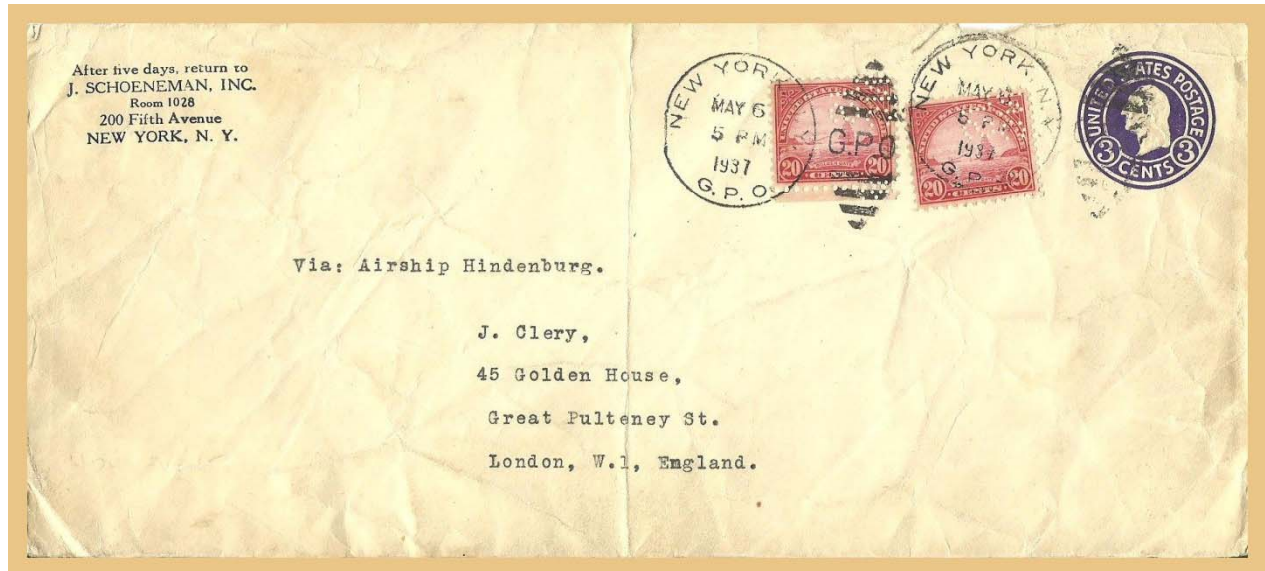


Figure 1
The cover in question

At first glance, I thought that this was a great cover. (See Figure 1, above.) It appeared to have everything: two perfined stamps, a corner card to insure correct perfin usage identification, nice clear New York postmark to establish date and best of all it was marked “Via: Airship Hindenburg.”

Examining each one of these “great” features led me down a path I was not expecting. Fortunately, I had a lot of help from Perfin Club stalwarts.

First, check the Perfin which is shown in Figure 2, at right. On initial examination I made the design to be JS/NC. This would match nicely with the J. Schoeneman, Inc. corner card. Quickly turning to The Perfins Club’s *Catalog of United States Perfins* (US Perfins Catalog) I could not find a listing for JS/NC. Ah, perhaps a previously unidentified pattern! However, having been fooled before, I turned to Bob Szymanski (LM#145) who correctly identified the pattern as **J150** (JS/INC) with the letter “I” missing on both stamps. There goes the dream from Unique to Damaged.

Additionally, Bob noted that not only was my cover missing the onboard Zeppelin cancel, he thought that 43 cents was a strange rate.

Okay, I filled in my application for three day Perfin Identification School. The US Perfins Catalog lists Baltimore as the company’s location; however, New York is listed as an additional city of usage.



Figure 2
The stamps
(enlarged)

Not flown? I had not considered that since the “Via: Airship Hindenburg” on the cover aligns perfectly with the addressee lines and was obviously typed with the same machine. There seemed to be no problem.

The New York G.P.O. postmarks marked the stamps canceled on Thursday, May 6, 1937 - the very day that the German passenger airship LZ 129 *Hindenburg* caught fire and was destroyed during its landing at Lakehurst, New Jersey!

Well, we know almost everything about our beat up cover, we might as well check the rate. After chasing false leads all over the internet, I finally remembered that club member Rudy Roy (#1124) is

(Continued on Page 113)

Might Have Been ... (continued)

an officer in the American Air Mail Society. Rudy provided the final bit of information as follows:

"From what I see, the cover was intended for just the one-way return flight to Germany. The Zeppelin rate was 40 cents and the 3 cents was required for domestic air transport to Lakehurst.

"Reference: *U.S. International Postal Rates, 1872-1996*, by Anthony S. Wawrukiewicz and Henry W.

Beecher, 1996, *Chapter 13, International Airmail Letter Rates, Zeppelin Carriage*, pp. 206-7. Specifically, listing - ag. "Letter/card for Europe, Asia, or Africa; by Zeppelin (Hindenburg) from Lakehurst to Frankfurt, Germany, per 1/2 oz., with air service in continental USA." Rate effective April 3, 1936. Cited rate 43 cents. The rate remained the same in 1937."

Interesting N101 Cover

Bob Szymanski (LM#145)

It is so easy to get confused and the older I get the more confused I get. This beautiful multi-colored perfin cover is enough to confuse anyone. Yes, it is apparent that this is a 2¢ Washington perf. 12 on cover. The postmark reads December 5, 1912. The perfin pattern is **N101** (NKF) as shown in the *Catalog of United States Perfins*, a "D" rated perfin. In itself, this is an interesting advertising cover.

somewhat fittingly, it went from the Indian Territories to Indiana! Interesting? But did you know that Brazil is located in Indiana? I actually looked to see if the USPS sent this to Brazil in South America but, no, they actually knew where Brazil, Indiana was! And, as the population of Brazil was never more than 9,000 some hardy souls, the USPS delivered the letter without an address. I wonder if this same letter was



On further study, you will notice the cancel is not from Chicago, where you might expect, but from Chickasha, Oklahoma, which was part of the Indian Territories before becoming part of the State of Oklahoma in 1907. Could it be a stamped return envelope meant to be sent back to the Chicago located company? Maybe. But this cover had other ideas, as

posted this year whether it would be sent to South America. Probably not with 2¢ in postage. This is today's geography lesson. But, how about a little historical side note. Brazil, Indiana was the birthplace of Jimmy Hoffa! See what fun you can have with perfins!

Thank You from The Perfins Club!

Ken Rehfeld (#3394)

Thanking these members who made donations along with their dues:

Contributing Membership:

4058 CHARLES A. BROWN
 4025 LEON J. LaCHANCE
 3902 BEN ADAMS
 4020 STEPHEN BANKS
 3165 LEE BASTIEN
 3825 DAN BAUGHER
 2697 ROGER S. BRODY
 3511 JOHN R. BUCKLES
 3984 ROBERT E. CHALLEY
 3882 W.A. COOPER
 2157 ROBERT J. DEDECKER
 3859 PHILIP J. DeMARIS
 3817 STEVE A. DIRKSEN
 3977 JOSEPH DOUGHERTY
 3747 GUSTAV G DUEBEN III
 3708 DENNIS E. EWERT
 3637 DR. URIEL FEDERBUSH
 4045 JAMES W. FELTON
 3826 NEAL G. FRAZIER
 1539 TOM E. GOODWIN

2605 JOHN A. GRANT
 3711 LENORE K. GRAY
 2490 GARY G. HENDREN
 3992 ROBERT LITRELL
 3981 ROBERT W. MARTIN
 3768 EDWARD MEHLMAUER
 3969 LESTER H. MELTZER
 2986 RENE A. MICHAUD
 3098 DONALD D. NELSON
 3436 DONALD H. NELSON
 3621 LOREN W. NEUHARTH
 2194 ANTHONY PAGLIUCA
 2152 WESLEY J. PERKINSON
 1338 TED PINAS
 1481 LOUIS E. REPETA
 3613 RICK SCHRIER
 3703 STEVEN L. SHERMAN
 3758 JEFFERY SIGLER
 3888 MICHAEL D. STERRETT
 3035 BLAIR M. STITT
 2949 STEPHEN J. TAUBER
 3926 CSABA URMENYI
 3739 DOUGLAS WALKER
 3757 KIRBY E. WILLEMS
 4006 OTTO F. WOLKE

Sustaining Membership

700 NORMAN H. PENCE
 3595 ROBERT BEASECKER
 3564 ROBERT BLACKMAN
 2566 FRANK M. CHERNICH
 2574 JOE COULBOURNE
 2687 THOMAS J. GERACE
 2299 RUTH M. GLIDDEN-PANTRY
 3788 G.R. HAAS
 4023 PAUL L. HARTMAN
 2902 CHARLES E. HAWLEY
 3054 JAMES J. HIRSTEIN
 3901 ANNAMARY KENNELL
 3975 ROBIN F. LEADEN
 3997 THOMAS MICKLER
 3638 JEAN OBERHOLTZER

3958 DONALD PICKERING
 3965 ROBERT D. RAWLINS
 3801 KEITH H. ROBERTSON
 1124 RUDOLPH J. ROY
 3602 ROBERT STUART SCHNEIDERMAN
 3809 TERRY W. SITCH
 1514 DAVID W. SMITH
 3579 DUANE E. SPIDLE
 4051 CRAIG J. STOWERS
 3157 SHARON L. STRAIT
 3849 GENE STUTZENSTEIN
 3744 FRANK SWEET
 3737 RONALD R. TELLIER
 LM 2549 DOUG TURNER
 3879 WAYNE WEATHERL
 3242 KENNETH L. WHITE
 3437 DONALD J. YOUNG

UNITED STATES POSTAL SERVICE® (All Periodicals Publications Except Requester Publications)

1. Publication Title The Perfins Bulletin	2. Publication Number 01200490	3. Filing Date 9/8/2014
4. Issue Frequency Bi-Monthly	5. Number of Issues Published Annually 6	6. Annual Subscription Price \$15.00
7. Complete Mailing Address of Known Office of Publication (Not printer) (Street, city, county, state, and ZIP+4®) 7909 N. Main Street Kansas City, Clay, MO 64118-1449		Contact Person Ken Masters Telephone (include area code) 816-835-5907
8. Complete Mailing Address of Headquarters or General Business Office of Publisher (Not printer) 7909 N. Main Street Kansas City, MO 64118-1449		
9. Full Names and Complete Mailing Addresses of Publisher, Editor, and Managing Editor (Do not leave blank)		
Publisher (Name and complete mailing address) Ken Masters 7909 N. Main Street, Kansas City, MO 64118-1449		
Editor (Name and complete mailing address) Clark Buchi 816 High Point Ridge Road, Franklin, TN 37069-4767		
Managing Editor (Name and complete mailing address) Clark Buchi 816 High Point Ridge Road, Franklin, TN 37069-4767		

10. Owner (Do not leave blank. If the publication is owned by a corporation, give the name and address of the corporation immediately followed by the names and addresses of all stockholders owning or holding 1 percent or more of the total amount of stock. If not owned by a corporation, give the names and addresses of the individual owners. If owned by a partnership or other unincorporated firm, give its name and address as well as those of each individual owner. If the publication is published by a nonprofit organization, give its name and address.)

Full Name The Perfins Club Ken Rehfeld, Secretary	Complete Mailing Address P. O. Box 125 Spokane Valley, WA 99016-0125
---	--

11. Known Bondholders, Mortgagees, and Other Security Holders Owning or Holding 1 Percent or More of Total Amount of Bonds, Mortgages, or Other Securities. If none, check box None

Full Name	Complete Mailing Address

12. Tax Status (For completion by nonprofit organizations authorized to mail at nonprofit rates) (Check one)
 The purpose, function, and nonprofit status of this organization and the exempt status for federal income tax purposes:
 Has Not Changed During Preceding 12 Months
 Has Changed During Preceding 12 Months (Publisher must submit explanation of change with this statement)

PS Form 3526, July 2014 (Page 1 of 4) (see instructions page 4) PSN: 7530-01-000-9931 PRIVACY NOTICE: See our privacy policy on www.usps.com

13. Publication Title The Perfins Bulletin		14. Issue Date for Circulation Data Below September 1, 2014	
15. Extent and Nature of Circulation International - 99% Mailed		Average No. Copies Each Issue During Preceding 12 Months	No. Copies of Single Issue Published Nearest to Filing Date
a. Total Number of Copies (Net press run)		517	500
b. Paid Circulation (By Mail and Outside the Mail)	(1) Mailed Outside-County Paid Subscriptions Stated on PS Form 3541 (include paid distribution above nominal rate, advertiser's proof copies, and exchange copies)	305	306
	(2) Mailed In-County Paid Subscriptions Stated on PS Form 3541 (include paid distribution above nominal rate, advertiser's proof copies, and exchange copies)	2	2
	(3) Paid Distribution Outside the Mails including Sales Through Dealers and Carriers, Street Vendors, Counter Sales, and Other Paid Distribution Outside USPS®	0	0
	(4) Paid Distribution by Other Classes of Mail Through the USPS (e.g., First-Class Mail®)	174	169
c. Total Paid Distribution (Sum of 15b (1), (2), (3), and (4))		481	477
d. Free or Nominal Rate Distribution (By Mail and Outside the Mail)	(1) Free or Nominal Rate Outside-County Copies included on PS Form 3541	6	6
	(2) Free or Nominal Rate In-County Copies included on PS Form 3541	0	0
	(3) Free or Nominal Rate Copies Mailed at Other Classes Through the USPS (e.g., First-Class Mail)	4	4
	(4) Free or Nominal Rate Distribution Outside the Mail (Carriers or other means)	0	0
e. Total Free or Nominal Rate Distribution (Sum of 15d (1), (2), (3) and (4))		10	10
f. Total Distribution (Sum of 15c and 15e)		491	487
g. Copies not Distributed (See Instructions to Publishers #4 (page #3))		26	13
h. Total (Sum of 15f and g)		517	500
i. Percent Paid (15c divided by 15f times 100)		98.0	97.9

* If you are claiming electronic copies, go to line 16 on page 3. If you are not claiming electronic copies, skip to line 17 on page 3.

UNITED STATES POSTAL SERVICE® (All Periodicals Publications Except Requester Publications)

16. Electronic Copy Circulation	Average No. Copies Each Issue During Preceding 12 Months	No. Copies of Single Issue Published Nearest to Filing Date
a. Paid Electronic Copies	1	1
b. Total Paid Print Copies (Line 15c) + Paid Electronic Copies (Line 16a)	482	478
c. Total Print Distribution (Line 15f) + Paid Electronic Copies (Line 16a)	492	488
d. Percent Paid (Both Print & Electronic Copies) (16b divided by 16c x 100)	98.0	98.0

I certify that 50% of all my distributed copies (electronic and print) are paid above a nominal price.

17. Publication of Statement of Ownership
 If the publication is a general publication, publication of this statement is required. Will be printed in the **Nov/Dec 2014** issue of this publication. Publication not required.

18. Signature and Title of Editor, Publisher, Business Manager, or Owner
 Ken Rehfeld, Publisher
 Date: 9/8/2014

I certify that all information furnished on this form is true and complete. I understand that anyone who furnishes false or misleading information on this form or who omits material or information requested on the form may be subject to criminal sanctions (including fines and imprisonment) and/or civil sanctions (including civil penalties).

PS Form 3526, July 2014 (Page 3 of 4) PRIVACY NOTICE: See our privacy policy on www.usps.com

Sales Circuit Announcement

by Robert T. Combs (LM#24)

HAPPY FALL!!! TIME FOR SALES CIRCUITS IS UPON US!

Fall is upon us and the mind turns toward collecting! All of you collect different things! Ever thought of selling your duplicates through the Perfins Club Sales Circuits?

We have BUYERS, so we must have SELLERS! Currently we can use pretty much anything you would like to part with. However, FOREIGN and better US material are ALWAYS in prime demand.

If you can find a few things you do not need, send them my way and I will make you a little extra stamp money. You price it (remember to price at what you would like to pay for it) and we will sell it.

Booklets available for the higher individual valued items (for a small fee) or send the material in packets of 100 (maximum per packet) at an "all for the same" price (i.e., 20 cents each, 25 cents each, etc.)

Contact me online at: stampmgr@hubwest.com or drop a snail mail my way. (See my address on Page 102.) If you must call, leave a message on the answering machine and I will get back to you.

If you are interested in becoming a BUYER please notify me and I can get a form out to you to sign.

I hope the Fall and Winter and Spring collecting period is a beneficial time for your collection. I hope to hear from a few of you.

Publications Announcement

by David Lightle (#3480)

Good news! It has been decided that all future sales of the US Perfins catalog will be sold with the Addendum and Corrections #4 (A&C#4) included at a

price of \$75.00 to club members. Publication Sales Manager David Lightle's contact information can be found on Page 102.

Bosnia and Herzegovina Committee Formed

by Bob Schwerdt (LM#505)

A new International Committee has been organized by Anne Toklum of Norway for the study of the perfins of Bosnia and Herzegovina.

Those of us who have material - especially covers and scarce or unusual types of perfins - are

encouraged to send color scans (high resolution, 300dpi or better) to the following email address:

casa.toklum@hotmail.com

For acknowledgement, please include first name, last name, country (USA, UK, etc.).

Member Want Ads

Want ads are published for members on a space-available basis at the following rates: one insertion - 10 cents per word; three consecutive insertions of the same ad - 20 cents per word. **Members are entitled to one free ad per year.** Neither the Perfins Club nor the Editor accepts responsibility for the validity of the ads. Payment for the ads should be sent to the Editor or by PayPal to perfin@charter.net with prior notification to the Treasurer and Editor.

Seeking: Perfins from German occupied territories WWII, highest prices paid.

Contact: W. David Ripley, Box 854, Beltsville, MD 20704
Email: wdrip3@gmail.com

Wanted: Perfined precanceled Washington Bicents (Scott #704-15).
Contact: Richard Fehler **Email:** rfehler@gmail.com

Wanted: 1950 California Statehood Issue (Scott #997) with perfins (on or off cover).

Contact: Hideo Yokota, 10 Anita Court, Belmont, CA 94002-2012. **Email:** hryokota@hotmail.com

Prices Realized—Auction #139

(August, 2014)

Joe Giampietro (#2968)

Lot bid	Lot bid	Lot bid	Lot bid	Lot bid	Lot bid
1 \$ 24.00	27 \$ 18.00	53 \$ 2.00	79 \$ 23.00	105 \$ 31.00	131 \$ 8.00
2 \$ 2.00	28 \$ 15.50	54 \$ 24.00	80 \$ 6.25	106 \$ 6.50	132 \$ 8.00
3 \$ 2.00	29 \$ 7.25	55 \$ 6.00	81 \$ 2.00	107 \$ 2.00	133 \$ 2.25
4 \$ 2.00	30 \$ 2.00	56 \$ 15.50	82 \$ 2.00	108 \$ 2.25	134 \$ 2.25
5 \$ 4.25	31 \$ 3.75	57 \$ 18.00	83 \$ 2.00	109 \$ 2.00	135 \$ 3.25
6 \$ 18.00	32 WD	58 \$ 2.00	84 \$ 31.00	110 \$ 2.00	136 \$ 4.25
7 \$ 6.00	33 \$ 2.00	59 \$ 2.00	85 \$ 24.00	111 \$ 2.00	137 \$ 31.00
8 \$ 20.00	34 \$ 2.00	60 \$ 2.00	86 \$ 2.00	112 \$ 43.00	138 \$ 6.25
9 \$ 24.00	35 \$ 6.00	61 NB	87 \$ 2.00	113 \$ 30.00	139 \$ 10.50
10 \$ 6.00	36 \$ 2.00	62 \$ 24.00	88 \$ 23.50	114 \$ 7.00	140 \$ 10.50
11 \$ 18.00	37 \$ 3.75	63 \$ 2.00	89 \$ 3.75	115 \$ 20.00	141 WD
12 \$ 2.75	38 \$ 6.50	64 \$ 2.00	90 \$ 6.50	116 \$ 5.00	142 \$ 10.50
13 \$ 2.75	39 \$ 15.50	65 \$ 2.00	91 \$ 2.00	117 \$ 20.00	143 \$ 12.50
14 \$ 54.00	40 \$ 6.50	66 \$ 2.00	92 \$ 2.00	118 \$ 2.25	144 WD
15 NB	41 \$ 24.00	67 \$ 2.00	93 \$ 10.50	119 \$ 6.25	145 \$ 6.25
16 \$ 2.00	42 \$ 3.75	68 \$ 24.00	94 \$ 6.00	120 \$ 2.25	146 \$ 23.00
17 \$ 2.00	43 \$ 2.00	69 \$ 3.75	95 \$ 6.00	121 \$ 2.25	147 \$ 13.50
18 \$ 2.00	44 \$ 4.25	70 \$ 13.50	96 \$ 2.00	122 \$ 3.25	148 \$ 8.25
19 NB	45 \$ 6.50	71 \$ 3.75	97 \$ 6.00	123 \$ 2.25	149 \$ 6.25
20 \$ 18.50	46 \$ 2.00	72 \$ 3.75	98 \$ 2.00	124 \$ 2.25	150 \$ 4.25
21 \$ 2.00	47 \$ 2.00	73 \$ 3.75	99 \$ 2.00	125 \$ 6.25	151 \$ 6.25
22 \$ 2.75	48 \$ 15.50	74 \$ 4.75	100 \$ 2.00	126 \$ 2.25	152 \$ 12.25
23 \$ 18.50	49 \$ 2.25	75 \$ 4.50	101 \$ 2.00	127 \$ 2.25	153 \$ 20.00
24 \$ 2.75	50 \$ 24.00	76 \$ 4.50	102 \$ 2.00	128 \$ 6.25	154 \$ 11.00
25 \$ 2.00	51 \$ 6.50	77 \$ 3.75	103 \$ 2.00	129 \$ 2.25	
26 NB	52 \$ 6.00	78 \$ 3.75	104 \$ 2.00	130 \$ 8.00	

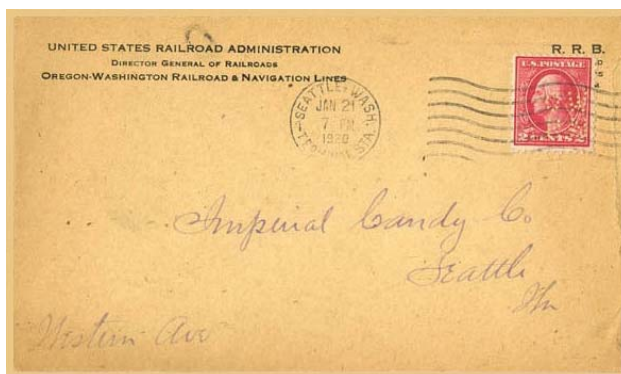
Cutler's Clippings

Doug Cutler (LM#126)



France C5a (left) - 1930 "E1PA30" perfin on 1.50 deep carmine (C5a), original gum, never hinged. Very Fine. Maury P.A. 5C €5,000 (\$6,350). **SOLD FOR \$1207.50**

1917, 2¢ deep rose, type Ia (500) (right) "OW/RN" perfin tied by Seattle machine cancel, Jan 21, 1920 on local cover, U.S. Railroad Administration, **Oregon-Washington Railroad & Navigation** corner card, Very Fine. **SOLD FOR: \$322.00**



Perfins Club Auction #141

Closes December 31, 2014

Guidelines: A minimum bid of \$2.00 applies to every individual lot except as follows: U.S. “B”, “B+”, and “A” rated patterns, minimum bids for which will be \$6.00, \$18.00, and \$30.00, respectively, and single U.S. “C” rated perfins, minimum bids for which will be \$1.00. Lots will be sold to the highest bidder at the following advances over the next highest bidder \$2-\$5 – a \$0.25 advance; \$5-\$20 – a \$0.50 advance; a \$20-\$100 – a \$1.00 advance; \$101 or higher a \$5.00 advance. No

unlimited bids accepted. The earlier postmark or email date, will prevail in tie bids All single perfins are complete and in good condition, unless otherwise noted. Straight edges are not considered to be defects. All lots except large lots or mixtures with the exception of gross miscounts.

Bid by lot #. Please put your mailing address and email address {if have} on your bid sheet.

Good Luck!

Send all bids to: Joe Giampietro, 6478 State Road, G-10, Parma, OH 44134-4166 – USA
Email: mo13jo@aol.com

Abbreviations used:

ADD – All Different Designs
 DDF – Design Different Face
 MDF - Mostly Different Face

PREPER – Precancelled Perfin
 SE – Straight edge(s)
 (?h) - Number of missing pins

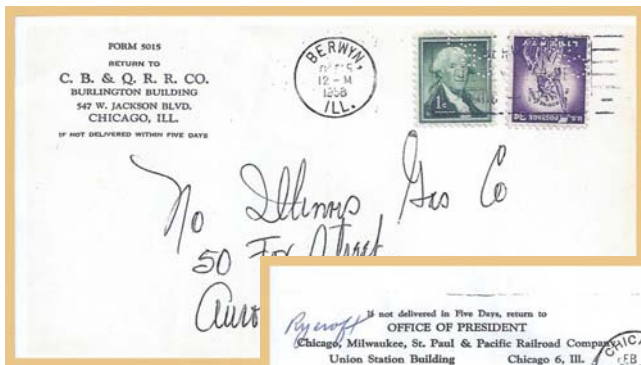
Scott #s are used. The pattern numbers and ratings for U.S. perfins are from the 1998 *Catalog of United States Perfins*, including A&C#1, #2, and #3.

Lot	Country	Description	Rate	Lot	Country	Description	Rate	Lot	Country	Description	Rate
1	US	A24	C+	20	US	C354/556	C+	36	US	J6	C+
		hinge thin		21	US	C356.12/807	C+			2h & on edge	
2	US	A253	B	22	US	C393/720	C+	37		Withdrawn	
3	US	A254A/642	C+	23	US	D63/375	C+	38	US	J27.5/1288	B
4	US	B116-36/427	C+	24	US	D152/Q1	C	39	US	J115P/1596	B
5	US	B137.5/512	B+	25	US	E42/636	B	40	US	L81/508	C+
6	US	B204/465(se)	C+			on edge		41	US	M89	C+
7	US	B204/468	C+	26	US	E52/639	B	42	US	M92/554	C+
8	US	B227	C+	27	US	E52/693	B	43	US	M235 (6h)	C+
9	US	B250/504(se)	C+	28	US	E52/697	B	44	US	M289.5 (se-4h)	B
10	US	C19/499	C+	29	US	E52/815	B	45	US	M300.5/515	C+
11	US	C97	B	30	US	F19 (se)	C+			(se - 4h)	
		se & scrape		31	US	G35	C+	46	US	N54/Q8 (se-2h)	E
12	US	C98/470	C+	32	US	G81	C+	47	US	N54A/Q7	C+
13	US	C120/594	C+			lower lt corner off		48	US	N89I/551	B
14	US	C175/905	B	33	US	I26.5	C+	49	US	N89i/569	B
15	US	C177	C+			1cent Washington		50	US	N90.5C (1h)	B
16	US	C203 (se)	C+	34	US	I26.5	C+	51	US	N175B	C+
17	US	C261.5/512	C+			5cent on edge		52	US	P71	C+
18	US	C281	C+	35	US	I98/643	B	53	US	P203.5P/1861	A
19	US	C300	C+					54	US	R91/516	C+

Continued on Page 118

Perfins Club Auction #141 (cont.)

Lot	Country	Description	Rate	Lot	Country	Description	Rate	Lot	Country	Description	Rate
55	US	R136A (se) C+		Multiple Cs				82	PSS-202	F34.5/504	B-BW
		left side shaved		69		I97, J108.6, J122				Prec split Orange, NJ	
56	US	S21 C+		70		M81, M224, M270		83	PSS-63	L180/642	D-DW
57	US	S114A/634 B		71		Q1, R127, R136				San Fran	
		Bottom shaved		72		S195-58, S247, S365		84	PSS-204	P174A/513	D-BW
58	US	S128.1P B		73		U80, U80.5, U82.17				Prec split Janesville, Wis	
		se mint nh		74		W7.7, W72.9,		85	PSS-61	R27/684 (LA)	D-DV
59	US	S169A/562 A				W199.19		86	PSS-L2E	S195-13/640	C-CW
		pulled perf.		75		W72.7 W72.50A,				Jacksonville, Fla.	
60	US	S195.8/634 B				W72.62		87	PSS-243	S215A/633	D+EW
61	US	S206/375 B		76		W22, W37, W129				Oakland, Cal.	
62	US	S269/506 (se) B		77		W170, W203-3,		88	PSS-42	W72.68/599	C+BW
63	US	T97A/557 B+				W227				Denver	
		1h - + 3h on edge		Prepers				89	33	Prepers	D-F
64	US	U82-16/332 B+		78	PSS-61	A163A/557 C-BW				some dups.	
		P.Perf slight tear				Chicago		Railroads			
65	US	W17/378 B+		79	PSS-61	A163A/642 C-BW		90	US	L142/589	C+
		1h on edge				Chicago		91	US	L156A	C
66	US	W41(onedge) C+		80	PSS-L12E	B270/399 CC-X		92	US	W154/806	C
67	US	W154/638 C				Pan Pac San Fran.		93	US	W154/807	C
68	US	Des31/556 C+		81	PSS-L6E	C261.5/512 C+BW		94	US	40 1938 prexis	
		damaged perfin ok				Cincinnati				13-dif no duplicates	D-F



**Lot #95
CBQ
C43, rated E
(above)**



**Lot #96
SFE
S121, rated F
(above)**



**Lot #97
STP
S287, rated F
(at right)**

**End of Auction #141.
Good Luck with Your Bids!!**

Secretary's Report

Ken Rehfeld (#3394)

New Member:

#4073 Harry Bissell, Jr.
301 N Market St
Delphi IN 46923-1517
Web

Welcome Back:

#3812 Al Pentis
PO Box 2154
Ramona CA 92065-0936

Resigning Members:

#4036 Catherine Rothman
#4046 Chuck Cummings

Closed Album:

#3939 Charles McGuire
#765 Ivan L. Phalser

Address Changes:

#3172 Rev John Pearson
369 Seastone St
Raleigh NC 27603-3090

#3990 John Schupp Jr.
65 Verde Valley School Road Apt H1
Sedona AZ 86351-9005

#2382 Roland Coolbaugh
6199 N Bandon Pl
Garden City ID 83714-4057

#3960 John Gable III
1019 E Inglewood Dr
Charlottesville VA 22901

Dropped for non payment of dues:

#1013 FERNAND M. ARNDT
#3979 WIL L. BOBBIN
#4035 JAMES F. BOCKMAN
#3954 ROBERT T. BURNEY
#3899 JOSEPH D. CERRETO
#3670 KENNETH LEE CHOTINER
#4055 FRANK G. ELLIS
#3807 BARRY FEDDEMA
#3824 ROBERT K. GARRITY
#3263 BARRY GELDZAHLER
#4031 RONALD A. HOUSER
#4042 SCOT KAMINS
#2989 DAVID LARKEY
#3498 RONALD E. LESHER
#3993 CHARLES B. LEWIS
#2423 ERNEST T. LOBACZ
#4012 JOHN MAHONEY
#4032 DAVID L. MCKINNEY
#1876 BETTY R. MERTL
#1772 ED W. NEUMANN
#3889 PHIL W. NODDER
#3831 LESTER M. PERKINS
#3762 MACIEJ PILECKI
#1295 BILL RICHERSON
#3854 JOHN K. ROBINSON
#3940 JAMES SANDS
#3612 WILLIAM SCARPANTONI
#4049 SCOTT D. SIMPSON
#4019 LAWRENCE W. SPUUR
#4034 CHUCK E. SQUIRE
#4016 MATHEW A. STEPHENSON
#4041 GENE STEWART
#3254 ROBERT A. STOLDAL
#4015 KEVIN E. TESSNEER
#3346 RICHARD E. VETTER
#3931 JIM R WARDEN II
#4001 JOHN J. WIERZBICKI

Membership 426

A Suggestion

Clark Buchi (LM#4028)

Take a look at the list of "Dropped for non payment of dues" above. If you know any of these members, perhaps you would consider contacting them about their Perfins Club membership. Maybe it is an oversight or an error in our records. However, it

they are unhappy about some aspect of the Club or the *Bulletin*, we would like to know that, so that we can properly address the issue. In any case, we would be happy to welcome them back soon! Please let any of the officers know what you discover. Thank you!

Dues

Dues are payable by June 30 of each year to the Secretary

Please look at your mailing address on this *Bulletin*. If the date above your name is appears in red, then you need to renew. Some of you are paid through 2015 and, of course, you will not need to pay dues this year.

> MAKE THE CHECK OUT TO "THE PERFINS CLUB" << Do not make the check payable to the Ken Rehfeld. Then send it to me, Ken Rehfeld, P.O. Box 125, Spokane Valley, WA 99016-0125 USA.

You may also pay your dues via PayPal

to: perfin@charter.net. In the information line, please make sure you indicate this is for dues and give your member number so we can correctly mark you paid.

We will also be asking Life Members for confirmation. Please return this to Ken Rehfeld or send him email at kenrehfeld@comcast.net. Life Members who wish to receive the Bulletin by first class mail should send payment before the end of July—US is \$5, Canada \$7, Foreign \$10.

Thanks!

Item	U.S.	Canada	Other Non-U.S.
Annual Dues	US\$15	US\$18	US\$25
For First Class Mail, including Life Members, add	US\$5	US\$7	US\$10

Life Memberships are available as shown below. No dues to pay again! Contact Ken Rehfeld if interested.

Age	U.S.	Canada	Other Non-U.S.
54 years or less	US\$375	US\$450	US\$625
55 through 69 years	US\$300	US\$360	US\$500
70 years +	US\$225	US\$270	US\$375